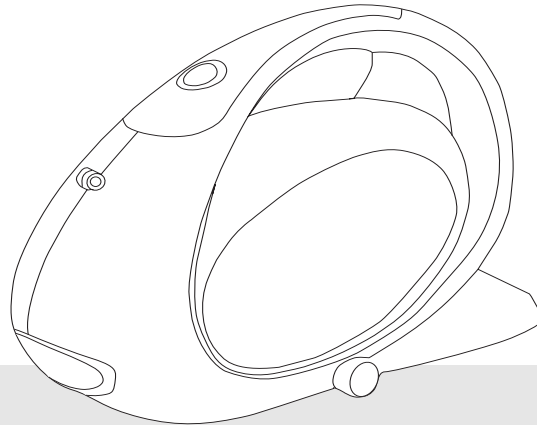


morphy richards®

Hand held vacuum cleaner



Please read and keep these instructions



getting the best from your
new cleaner...

If your cleaner is not picking up as well as it should, please check

- **Filters**

It is important to clean the hepa filter every time you empty the dust compartment otherwise the performance of the cleaner will be impaired. Wash regularly in warm water and leave to air dry. See pages 6 & 7 - Cleaning the filters.

Warning

Never operate the vacuum without a Hepa filter in place.
Empty the dust container before you remove the filter

- **Blockages**

Check the nozzle and hose for blockages



For replacement parts, help with using your Morphy Richards products and lots more, contact us by phone or through our website

UK

Helpline: **0870060 2604**
Replacement parts: **0870 167 6635**

Ireland 1800 409119

www.morphyrichards.com



Important safety instructions

The use of any electrical appliance requires the following common sense safety rules.

Primarily there is danger of injury or death and secondly the danger of damage to the appliance. These are indicated in the text by the following two conventions:

WARNING: Danger to the person!

IMPORTANT: Damage to the appliance! In addition we offer the following safety advice.

Location

- Do not use or keep this product outside when it is raining.
- Do not store the appliance near hot ovens or heating appliances.

Main lead

- Do not allow the mains lead to become strained or run this appliance over it.
- If the electrical cable becomes damaged the complete cable assembly must be replaced. Do not attempt this task yourself, contact Morphy Richards using the helpline number on the front of this leaflet

Children

- Children do not understand the dangers associated with operating electrical appliances. Never allow children to use this appliance.

Other safety considerations

- Never use the appliance without the filters installed.
- Never use appliance to vacuum hot ashes, broken glass, sharp objects or liquids.
- Never use in the presence of explosive

liquids or vapours.

- Never pick up inflammable or poisonous liquids such as petrol, copier toner, or other volatile substances. Never pick up acids, asbestos or asbestos dust.
- Always disconnect the appliance from the mains supply after use or prior to cleaning or replacing filters.
- The appliance should never be left running unsupervised.
- Never modify the cleaner in any way.
- Repairs to electrical appliances are only to be undertaken by trained personnel unprofessional repairs can be dangerous for users.
- Use only genuine Morphy Richards spare parts and accessories

Electrical requirements

Check that the voltage on the rating plate of your charger unit corresponds with your house electricity supply which must be A.C. (alternating current).

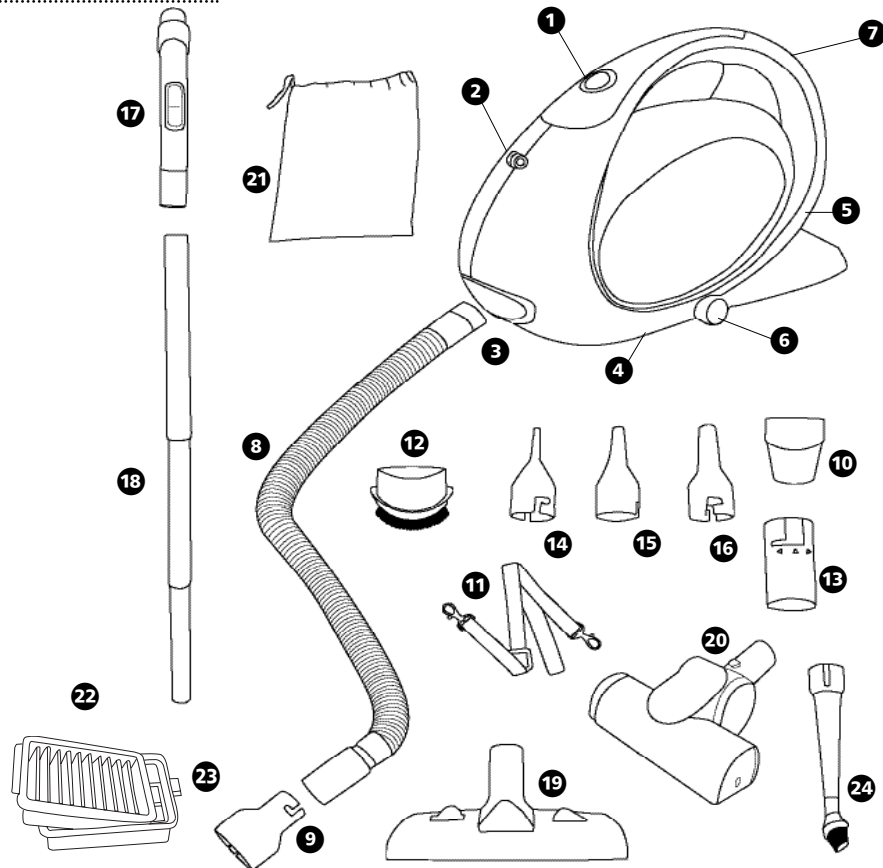
For appliances with fitted plug

If the socket outlets in your home are not suitable for the plug supplied with this appliance the plug should be removed and the appropriate one fitted.

Warning: The plug removed from the mains lead, if severed, must be destroyed as a plug with a bared flexible cord is hazardous if engaged into a live socket outlet.

Should the fuse in the 13 amp plug require changing a 13 amp BS1362 fuse must be fitted.

Features



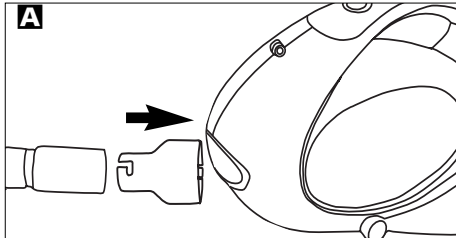
- | | |
|---|---|
| 1 On/off power switch | 13 Blower adapter |
| 2 Hooks for carrying strap | 14 Air bed inflator nozzle |
| 3 Hose inlet | 15 Medium nozzle |
| 4 Dust compartment (opens from beneath) | 16 Large nozzle |
| 5 Exhaust filter cover with blower function | 17 Hose handle with air bleed |
| 6 Dust compartment release button | 18 Extension tubes x3 |
| 7 Carry handle | 19 Floor nozzle |
| 8 Hose | 20 Turbo nozzle (pets model only) |
| Accessories you should have | 21 Accessory bag |
| 9 Hose adaptor | 22 Hepa filter |
| 10 Crevice nozzle (fits directly onto vacuum) | 23 Mesh filter cover |
| 11 Carry strap | 24 Long brush nozzle |
| 12 Brush nozzle (fits directly onto vacuum) | 25 Pre-motor filter (Not featured on this page, see page 7) |
| | 26 Exhaust filter (Not featured on this page, see page 7) |

Quick start

- 1 Assemble the desired accessories as shown on page 5.
- 2 Unwind the cable to it's full length and plug in to the mains supply.
- 3 Switch on by pressing the on/off power switch.

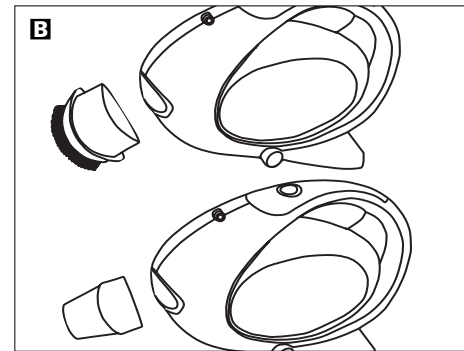
Accessories

- 1 Fit the hose to the cleaner by first inserting the hose adapter **9** to the hose inlet. **3** Attach the hose to the



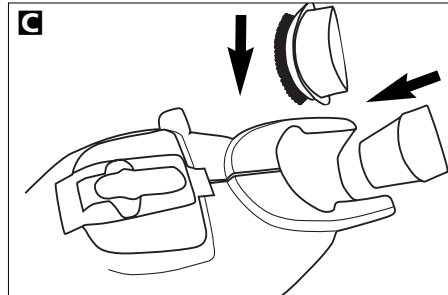
hose adapter. **A**

- 2 The brush nozzle **12** and crevice nozzle **10** can be fitted directly into the hose inlet. without the need for hose adapter. **B**



To store the brush nozzle and crevice nozzle, insert brush nozzle vertically into clip then slide crevice nozzle horizontally until it clips into place **C**

- 3 All the other accessories attach to the hose. The extension tubes **18** can be attached to the hose using the hose handle for floor cleaning or extra reach.



Carry strap **11**

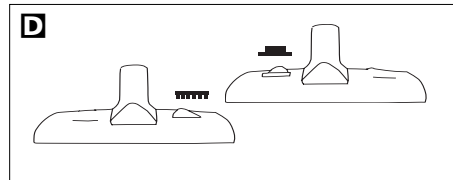
Your vacuum cleaner comes with a carry strap for added convenience.

The carry strap can be clipped on the two hooks **2** one at rear of the handle and the other in front of the on/off switch.

Floor Nozzle **19**

The floor nozzle adjusts to suit either carpet or hard floor. **D**

Press down on the symbol for hard floors or press down on the symbol to



retract the brushes for use on the carpet.

Turbo Nozzle **20** (pets models only)

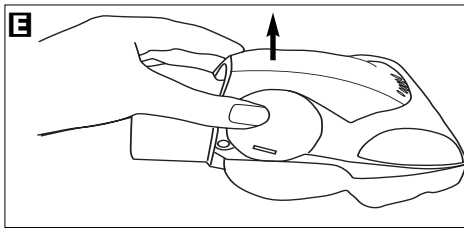
The turbo nozzle is ideal for use on carpets or upholstery to remove stubborn pet hair. Attach to the turbo nozzle directly to the hose handle **17** to remove stubborn pet hairs from upholstery or small areas of carpet. (Turbo nozzle is designed for small areas only for example pet beds and chairs)

WARNING Do not attach the turbo nozzle to the extension tubes.

Cleaning turbo nozzle (pets models only)

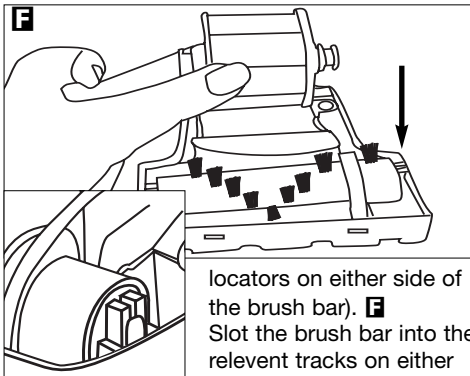
If the turbo nozzles rotating brush becomes entangled with hair it may require taking apart and cleaning

- 1 Unclip the top half of the nozzle by pulling the upper casing out slightly and lifting off. **E**



Clear out any blockages /pet hair, remove all components and clean if necessary.

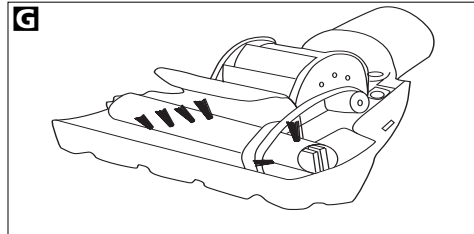
- 2 The main turbo wheel has a removable collar, this must be re-assembled correctly, other wise the nozzle will not go back together.
- 3 To re-assemble nozzle, take the brush bar with the toothed belt positioned over the track on the bar (notice the rectangular



locators on either side of the brush bar). **F** Slot the brush bar into the relevant tracks on either side of the lower casing.

Ensuring that the turbo wheel is correctly placed, loop the toothed wheel through the belt and lower the turbo wheel into the groove, provided in the lower casing. The internal assembly should be complete.

- 4 Ensuring that the brush bar, the turbo wheel and the belt are correctly located and positioned, take the top casing and position the slots over the teeth at the front of the lower casing and clip back into position.

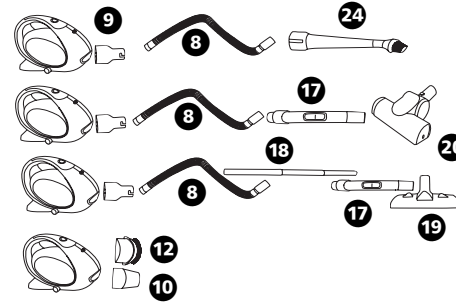


After re-assembly fit turbo nozzle on unit and ensure the brush bar is rotating correctly.

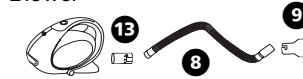
Assembling the product

Assembling Assembly

Vacuum



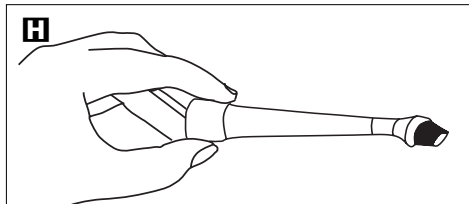
Blower



Note Make sure the correct end is fixed to the blower adapter, (smooth end).

Nozzle

When using the brush nozzle **24** to get extra suction place your finger over the hole. This is only for vacuuming **H**



Dust disposal

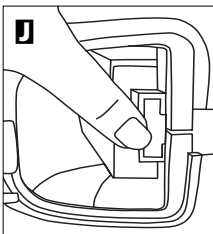
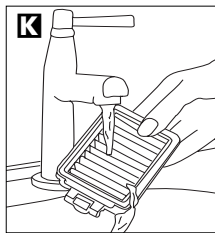
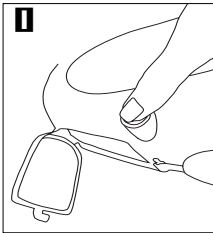
To obtain the best results from your cleaner be sure to check and empty the dust compartment regularly, otherwise the airflow and cleaning power will be reduced and you may damage your cleaner.

- 1 Ensure the cleaner is switched off and disconnected from the mains supply.
- 2 Hold over a dustbin and press in the dust compartment release button **6**, the dust compartment door will automatically drop down. Shake the vacuum to release the dirt and make sure it is completely empty. **I**

Hepa Filter cleaning

Warning: The dust compartment must be emptied BEFORE the Hepa filter is removed. Every time you empty the cleaner the Hepa filter must be cleaned.

- 1 Once the dust compartment is empty, remove the pleated hepa filter **22** and mesh filter **23** by pushing the tab to release. **I**

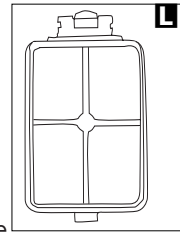


- 2 Pull the pleated hepa filter **22** out of the mesh filter cover **23** and clean both by gently brushing over the dustbin. Wash the filters regularly in warm water. **K**
Leave to air dry thoroughly before replacing into the cleaner.

DO NOT USE DETERGENTS

- 3 Replace the pleated filter into the mesh filter cover

Making sure the yellow tab on the Hepa Filter moulding is adjacent to the clip on the mesh filter cover **L and replace**

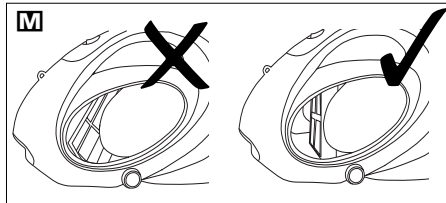


back into the cleaner. Ensure the hepa filter is securely fitted back into place.

Blocked filters will reduce the airflow to the motor, should the airflow become substantially blocked, the product will then be liable to overheat and the thermal fuse will activate. Should this activate, the product will stop functioning, unplug the product and allow it to cool down (this can take between 30-40 minutes depending on the ambient temperature conditions).

Inserting Hepa Filter **M**

Warning: Make sure that the Hepa filter



has been placed in correctly.

DO NOT USE THE PRODUCT WITHOUT THE HEPA FILTER FITTED.

IMPORTANT

- All filters should be checked regularly for signs of damage, preferably after each cleaning task. The filters must be replaced immediately if they become

- Always disconnect the cleaner from the mains when checking or replacing the filters.
- Always make sure the filters are fitted correctly before use. Failure to do so may result in damage to your product.

Pre Motor filter

The pre-motor filter **25** can be found by opening the dust compartment **4** using the dust compartment release button **6**.

Remove pleated hepa filter **22** and mesh filter **23**. Remove the pre-motor foam filter **25** from its securing tabs and clean or replace.

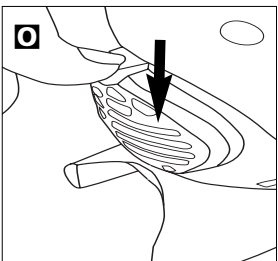
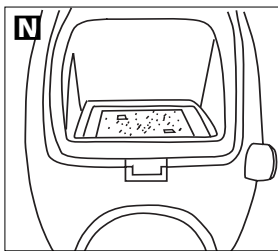
Replace the foam filter **25** over the small tabs making sure it's located correctly **N**.

Exhaust filter **O**

The exhaust-filter **26** must be cleaned regularly to remove the fine dust particles collected. This can be done by shaking it.

The exhaust filter is located behind the exhaust filter covers **5**. To remove, push down on the tab and remove the cover.

Pull out the foam filter **26** and clean or replace

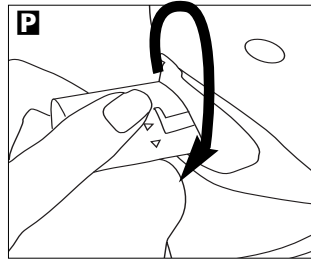


Using the blower function

- 1 Remove the exhaust filter cover **5** and foam exhaust filter **26**.
- 2 Push and twist clockwise **P** the blower connector **13** into the back of the cleaner to lock into place.
- 3 Attach the hose **8** to the correct end of the blower connector **13**.
- 4 The blower function can be used for a variety of uses including blowing dust from delicate surfaces and also drying pet fur.

If using to dry pet fur:

- **Never use the product in a wet environment.**
- **Do not use if the animal is frightened or distressed.**
- **Never leave the product alone with the animal. Never allow the animal to chew the product.**



Care and maintenance

Your cleaner is manufactured to withstand normal day-to-day use, but an occasional wipe over will help maintain its good looks. Abrasive cleaners should not be used.

Helpline

If you have any difficulty with your appliance do not hesitate to call us. We are likely to be more help than the store from where it was bought.

Please have the following information ready to enable our staff to help you.

- Name of product
- Model number as shown on the underside of the appliance.



Your two year guarantee

It is important to retain the retailers receipt as proof of purchase. Staple your receipt to this back cover for future reference.

Please quote the following information if the product develops a fault. These numbers can be found on the base of the product.

Model no. Serial no.

All Morphy Richards products are individually tested before leaving the factory. In the unlikely event of any appliance proving to be faulty within 28 days of purchase it should be returned to the place of purchase for it to be replaced.

If the fault develops after 28 days and within 24 months of original purchase, you should contact the Helpline number quoting Model number and Serial number on the product, or write to Morphy richards at the address shown. You may be asked to return a copy of proof of purchase. Subject to the exclusions set out below (1-5) the faulty appliance will then be repaired or replaced and dispatched usually within 7 working days of receipt.

If you suspect a fault, follow the simple checks detailed below before returning the appliance or calling the helpline.

- Check the filters for blockages.
- Check the tools / tubes for blockages.
- Check the plug is firmly in the socket and the supply is switched on.
- Make sure the socket is working by trying another appliance.
- Check the fuse in the plug.

If for any reason this item is replaced

Morphy richards products are intended for household use only.

Morphy richards has a policy of continuous improvement in product quality and design. The company, therefore reserves the right to change the specification of its models at any time.

during the 2 year guarantee period, the guarantee on the new item will be calculated from original purchase date. Therefore it is vital to retain your original till receipt or invoice to indicate the date of initial purchase.

To qualify for the 2 year guarantee the appliance must have been used according to the manufacturers instructions. For example, the filter must be cleaned regularly.

EXCLUSIONS

Morphy richards shall not be liable to replace or repair the goods under the terms of the guarantee where:

- 1 The fault has been caused or is attributable to accidental use, misuse, negligent use or used contrary to the manufacturers recommendations or where the fault has been caused by power surges or damage caused in transit.
- 2 The appliance has been used on a voltage supply other than that stamped on the products.
- 3 Repairs have been attempted by persons other than our service staff (or authorised dealer).
- 4 Where the appliance has been used for hire purposes or non domestic use.
- 5 The guarantee excludes consumables such as filters.

This guarantee does not confer any rights other than those expressly set out above and does not cover any claims for consequential loss or damage. This guarantee is offered as an additional benefit and does not affect your statutory rights as a consumer.

- This guarantee is valid in the UK and Ireland only.



morphy richards®

The After Sales Division
Morphy richards Ltd, Mexborough
South Yorkshire, England, S64 8AJ

Helpline (office hours)
UK 0870 060 2604
Republic of Ireland 1800 409119

VC73106M Rev 3 11/05